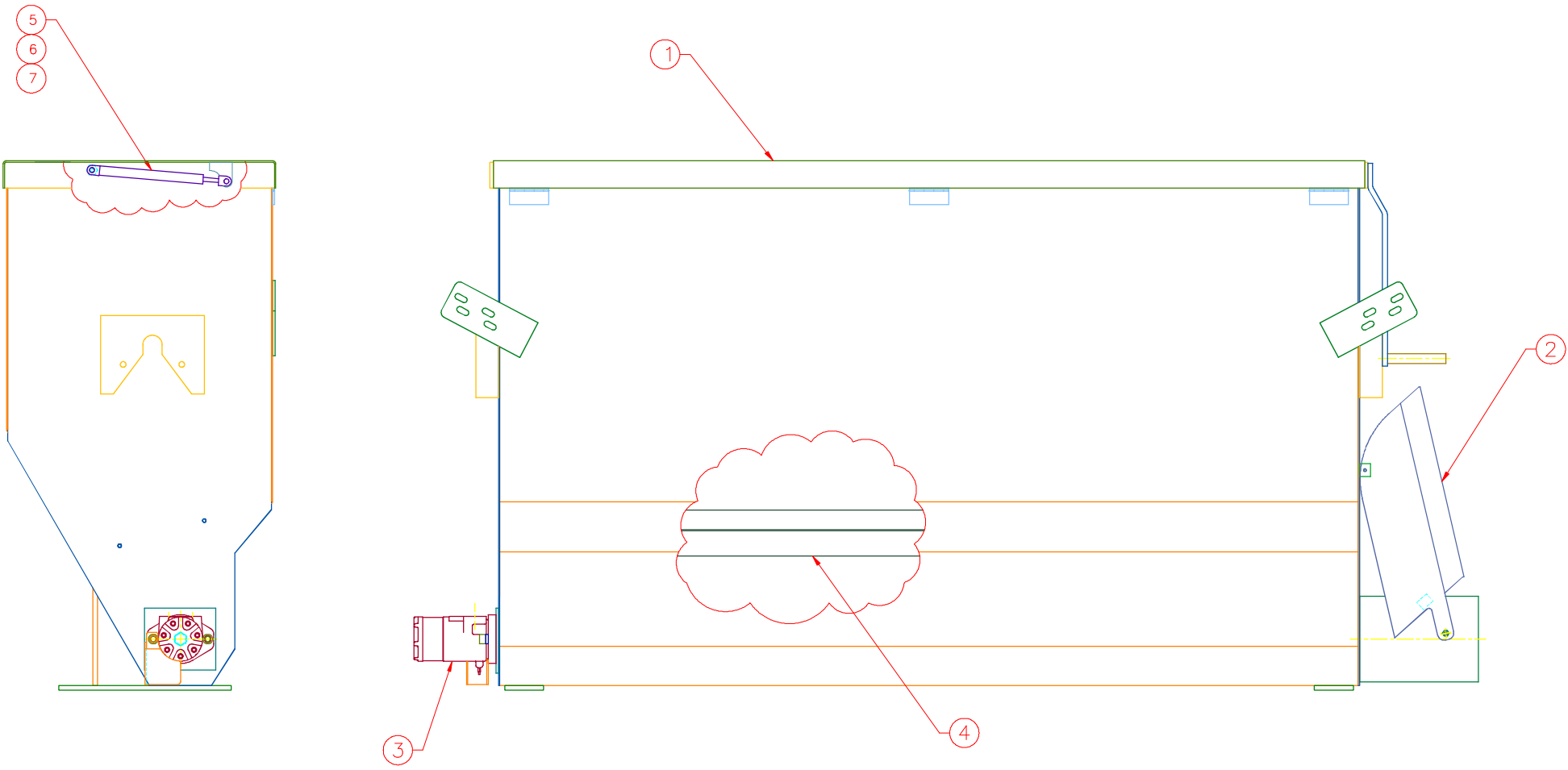


This drawing contains confidential proprietary information of Triple C, Inc. and is subject to return upon request. The furnishing of this drawing is not to be construed as the grant of any license, express or implied, to manufacture, have manufactured, use or sell the structures shown hereon.



ITEM	MATERIAL \ DESCRIPTION	LENGTH	QTY	DRAWING NO.
1	HF12-57 BODY WDMT.		1	30-1210
2	HF12-59 AUGER ASSY.		1	30-1220
3	HF12-58 MOTOR/AUGER.		1	30-1219
4	HF12-60 BAFFLE ASSY.		1	30-1221

TRIPLE C
INC.

P.O. BOX 248, SABETHA, KS 66534
(785) 284-3674 FAX (785) 284-3931

TOLERANCES
Unless otherwise specified
XX .010
XXX .005
XXXX .0005
X/X 1/32
ANGLE 0°30'

SHEET
OF
SCALE:
1:12

DRAWN BY:
CHRIS ABERLE
08/29/06
TITLE:
FINAL ASSEMBLY,
HF-1200
ASSEMBLY NUMBER:
HF12-61
DRAWING NUMBER:
30-0202
REV